



# KC FIXED ASSETS

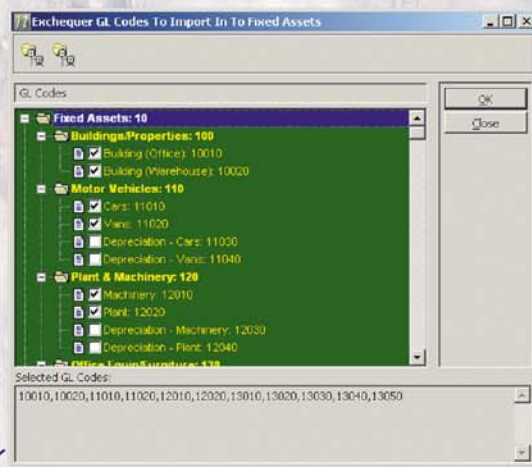
Fully integrated into Exchequer Enterprise with Enterprise look and feel this feature rich, yet simple to install and use Fixed Asset system leads the way in Fixed Asset Management Software.

## Fixed Assets Module

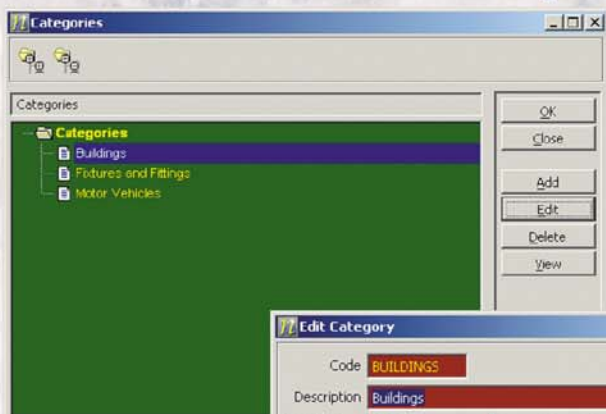
### Key Features:

- Links to Enterprise General Ledger and Purchase Ledger
- Assets grouped by categories
- Disposal of Assets
- Exchequer look and feel
- Re-valuation of assets
- User definable or automatic numbering of assets
- Opening Balances
- Facility to record supplier, vehicle and finance information
- Five user definable fields per category
- Image attachment per asset
- Quick asset history view

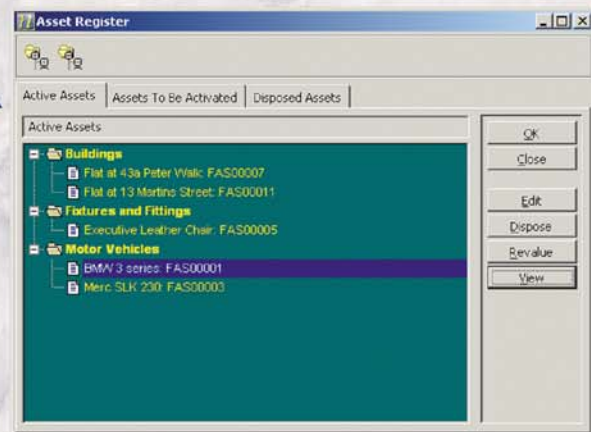
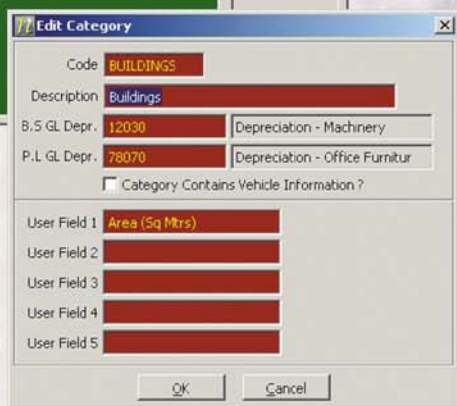
Configuration of the Fixed Asset general settings is very quick and easy. Fixed Asset users are defined and assigned appropriate security rights. When adding, editing or viewing assets, the asset information is split across multiple tabs to allow for easier finding and viewing of information.



The Exchequer GL tree structure is displayed to allow easy selection of valid codes for importing into the Fixed Asset register



Categories are defined, with default GL Codes. Also each category can have up to 5 user defined fields.



The asset register is split into three different sections : Active Assets, Assets to be Activated, and Disposed Assets.

# KC FIXED ASSETS

Exchequer  
SOFTWARE

Fixed Assets for Exchequer Enterprise

The following information can be held against an asset:

- Details relating to the depreciation method etc and also relating to the GL posting accounts in Exchequer
- Details relating to any finance / leasing can be held against each asset for your reference
- The 5 user defined fields created against the category for this asset
- A note pad allows you to keep notes against the asset
- An image can also be attached to the asset to show a visual representation of the asset
- All transactions that have taken place against this asset

If an asset is generated from either an Exchequer Purchase invoice or nominal journal, then the original details can be viewed from within the Fixed Asset register. Once all the required details have been entered against an asset, then and only then can the asset be activated and be ready for use in the register.

Once an asset has been disposed, it can still be viewed within the Asset register under the 'Disposed Assets' tab.

View Asset

Main | Depreciation | Finance | User Fields | Notes | Image | History | Close

Asset Code: FAS0001  
Description: BMW 3 Series  
Category: Motor Vehicles  
Date Acquired: 01/08/2003  
Deprec. Start: 01/09/2003 Next Deprecy: 01/10/2003  
Supplier: BR1901 Bristol Street Saab Limited  
Purchase Price: 28500.00  
Currency: E  
Cost Centre: AAA Head Office  
Department: #01 Sales Dept  
MOT Renewal: 01/08/2005  
Insurance Renewal: 01/08/2004  
Driver Name:

Post Depreciation

Post Depreciation

Period/Year: 09/2003

- Buildings
  - Flat at 43a Peter Walk: FAS00007 (£10800.00)
  - Flat at 13 Martins Street: FAS00011 (£611.02)
- Motor Vehicles
  - BMW 3 series: FAS00001 (£1600.00)
  - Merc SLK 230: FAS00003 (£413.89)
- Period/Year: 10/2003
  - Buildings
    - Flat at 43a Peter Walk: FAS00007 (£6480.00)
    - Flat at 13 Martins Street: FAS00011 (£598.31)
  - Motor Vehicles
    - BMW 3 series: FAS00001 (£1260.00)
    - Merc SLK 230: FAS00003 (£413.89)

When adding, editing or viewing assets, the asset information is split across multiple tabs to allow for easier finding and viewing of information.

The tree view above shows how the information is displayed to allow easy viewing of what details will be posted into each Exchequer Period.

Finance information can be held against each asset, allowing the recording of finance company, bank payment details, payment values and start/end dates for finance. A variety of reports are available including : Asset Information, Audit Trail, Disposal Report, Depreciation Report and Depreciation Forecast Report.

Exchequer Enterprise Global - Demo/Reseller Installation

File Transactions Records Search Procedures Reports Utilities Window Tools Fixed Assets Help

Asset Register  
Post Depreciation  
Categories  
General Settings  
GL Codes To Import  
Fixed Asset Users  
Reports

- Asset Report
- Audit Trail
- Asset Information
- Disposals Report
- Asset Additions Report
- Depreciation Report
- Depreciation Forecast Report

  
About Fixed Assets

The KC Fixed Assets module fully integrates within the Exchequer Enterprise menu system.